

# Walser® Matrices

Handmade in Germany



# Walser® Matrices

*...the safe and perfect shape*

## The company

Dr. Walser Dental GmbH has been manufacturing dental instruments for distribution worldwide since 1948. During this period the company has registered numerous patents. Developments for dentists by dentists include a sophisticated system of tooth filling matrices, the so-called Walser® matrices with forceps. This perfect modern system is the outcome of exhaustive scientific and practical experience and the continued development of a wide variety of shapes and sizes, which we manufacture very effortfully by hand in our factory in Germany.

## The product

WALSER® matrices are our most successful development. Tens of thousands of dentists in more than 120 countries worldwide work with these unique matrices and the number increases every day.

## The advantages

**The Walser® filling matrix has proved itself an exceptionally smart idea:**

- 1 Fitted and removed within a few seconds.
- 2 Optimal fillings and applied with a single motion.
- 3 Fits tightly and safely like a corset.
- 4 Automatically adapts itself to conical tooth shapes.
- 5 Patients can close their mouths and bite when the matrix is in place.
- 6 No screws or spanners are required.
- 7 The ideal cotton wool roll holder.
- 8 Easy to sterilise and extremely durable.
- 9 Matrix no. 24 can be ideally fitted over a cofferdam clamp.
- 10 Cost saving of up to 8000€/year\*

\*compared to screwing systems and sectional matrices

**16 more advantages on [www.walser-dental.com](http://www.walser-dental.com)**

## The service

Technical information and inquiries via e-mail or telephone (addresses see overleaf).

So simple to use:



### **One grip.**

*Tension the matrix with the Walser® matrix forceps and insert in the interdental space.*



### **Click.**

*Relax the forceps and release from the matrix.*



### **Fits.**

*The matrix adapts automatically perfectly around conical tooth shapes to fit tightly like a corset.*

*(Figures above: O-shape)*



*Application of all Walser® matrix shapes is ingenious and simple, for instance:*

X-shape

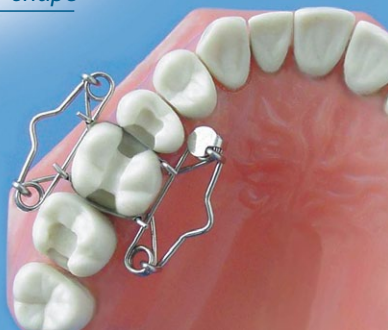


ON-shape



XF-shape

*„The Walser® matrix is quickly applied to fit tightly and safely like a corset.“*



## The range

**The „Walser® Matrix“ is produced in so-called X- and O-shapes:**

- X-shape:** Biplane fillings with existing interdental space.
- O-shape:** With MOD fillings and single, freestanding teeth.
- XF-shape:** For front teeth
- OF-shape:** For front teeth
- ON-shape:** E. g. for most posterior teeth, extra-large molars and for use over cofferdam clamps.

**The matrices are very suitable for children, too!**



The set of 25

**BEST-SELLER**



The set of 10

**Set of 25** on a sterilisation tray with forceps

**Set of 18** on a sterilisation tray with forceps

**Set of 10** on a sterilisation tray with forceps

**Kids Set** with forceps

**Matrix forceps** and **sterilisation trays** are available separately, too

**Walser® matrices** are available in 30 different sizes. Strip heights: 5 to 10 mm; thickness: 0.05 mm.

**Refill packs:**

Refill of 5 matrices: No. 1-22 + 25

Refill of 2 matrices: No. 23 / 24

# Professional opinions:

*„Walser Matrices are the second greatest achievement after the invention of the wheel. As the chief purchaser of the Lower Austrian Regional Health Insurance I've searched really long, but there is nothing that comes close to it on the whole market: Ideal points of contact, very good anatomy and sensational quickness. A very important point especially with treating children. I recommend Walser Matrices to all dentists who settle down with a private clinic, too.“*

**Dr. Jiri Proch, Tulln/Austria**

---

*„I appreciate Walser Matrices and recommend this fabulous system to all my colleagues. Here at my clinic in Mexico City patients appreciate the saved time and money, but more importantly, that nothing needs to be sent to the dental laboratory, like inlays. With this technique I can handle several teeth during one treatment.“*

**Dr. Esperanza Mieko Yumibe, Mexico City/Mexico**

---

*„I have always used Walser matrices. A crucial factor for me is the fact that they are simple, fast and safe to use and universally applicable. Moreover, they are also extremely durable. For me this is the perfect matrix system.“*

**Matthias Bacher, Wabern/Switzerland**

---

*„It's amazing the Walser system, not only me but my students love it and patients like it. After using this I really feel my investment in this system was really worth it. All my cases got a perfect contact restoration and I am able to finish cases in half of the time compared to other matrix systems.“*

**Prof. Dr. Unmesh Khanvilkar, University Navi Mumbai/India**

---

*„I have been searching for matrices, with which finally a good contact point could be made. A colleague recommended the Walser matrices and I was not disappointed. Another positive effect is the function of holding the cotton roll, particularly lingually!“*

**Dr. med. dent. Nicola Rosarius, Düren/GERMANY**

---

More testimonials on **[www.walser-dental.com](http://www.walser-dental.com)**

Tens of thousands of dentists in more than 120 countries trust in the original Walser® matrices and the number increases every day...

Dr. **Walser** Dental 

Dr. Walser Dental GmbH  
Fritz-Reichle-Ring 18  
78315 Radolfzell/GERMANY

Phone +49 7732 - 33 00  
E-Mail: [info@walser-dental.com](mailto:info@walser-dental.com)  
[www.walser-dental.com](http://www.walser-dental.com)

# Survey of all matrix sizes:

new

No.	Shape	Special features	Strip height	Application
1	X	also for milk molars	5.0 mm	PREMOLAR
2	X		6.5 mm	PREMOLAR
3	X		5.0 mm	MOLAR
4	X		6.5 mm	MOLAR
5	O	also for milk molars	5.0 mm	PREMOLAR SMALL
6	O		6.5 mm	PREMOLAR SMALL
6c	O	one strip side 3 mm longer	5/8 mm	PREMOLAR
7	O	also for milk molars	5.0 mm	PREMOLAR
8	O		6.5 mm	PREMOLAR
8a	O	for 4-surface fillings	6,5 mm	PREMOLAR
9	O		5.0 mm	MOLAR
10	O		6.5 mm	MOLAR
10a	O	for 4-surface fillings	8.5 mm	MOLAR
10c	O	one strip side 3 mm longer	5/8 mm	MOLAR
10d	O	one strip side 5 mm longer	5/10 mm	MOLAR
11	XF	strips slit towards the end	6.5 mm	11, 12, 21, 22
12	XF	"	8.0 mm	11, 12, 21, 22
13	X	extra short strips/also for milk molars	5.0 mm	13, 14, 23, 24 31, 32, 41, 42
14	X	extra short strips	6.5 mm	13, 14, 23, 24, 31, 32, 41, 42
15	O	"	5.0 mm	31, 32, 41, 42
16	O	"	6.5 mm	31, 32, 41, 42
17	X	extra tall strips	8.0 mm	4 - 5
18	X	"	8.0 mm	6 - 8
19	O	"	8.0 mm	4 - 5
20	O	"	8.0 mm	6 - 8
21	OF	strips slit towards the end	8.0 mm	11, 21
22	OF	"	8.0 mm	12, 22
23	ON	longer strips, wide span	5.0 mm	6 - 8
24	ON	attaches over cofferdam clamp!!	6.5 mm	5 - 8
25	O	intermediate size (Special form for milk molars; also very suitable nos. 1, 5, 7, 13)	5.0 mm	MILK MOLAR



The refill of 5

Dealer's imprint

More awards on [www.walser-dental.com](http://www.walser-dental.com)

